



# GMT MONTHLY MEMBERSHIP PROGRESS REPORT

Results as of: 3/31/2019

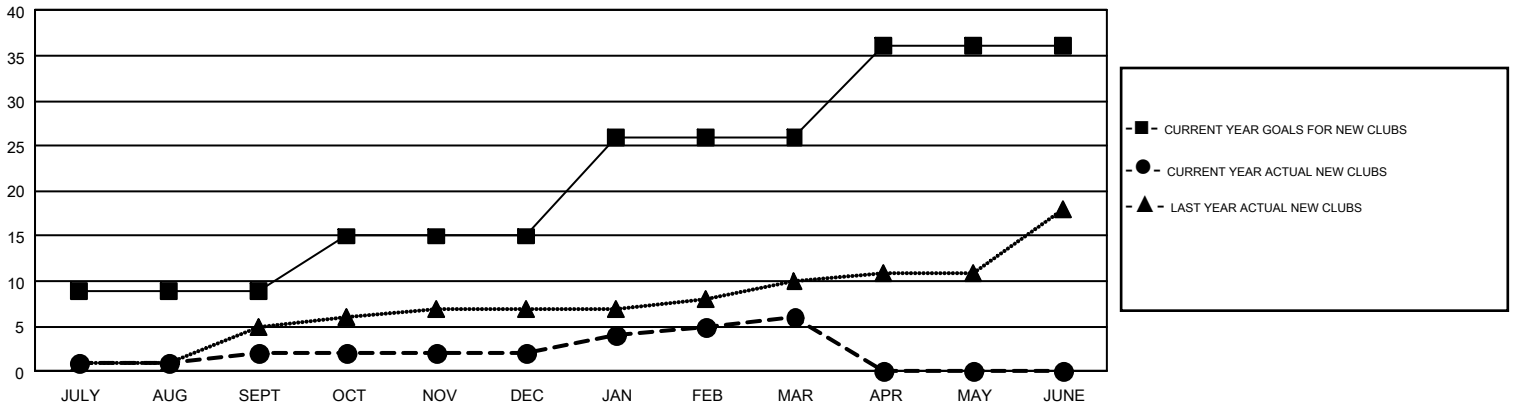
## GMT Constitutional Area 1, Group B

GMT: CINDY GREGG

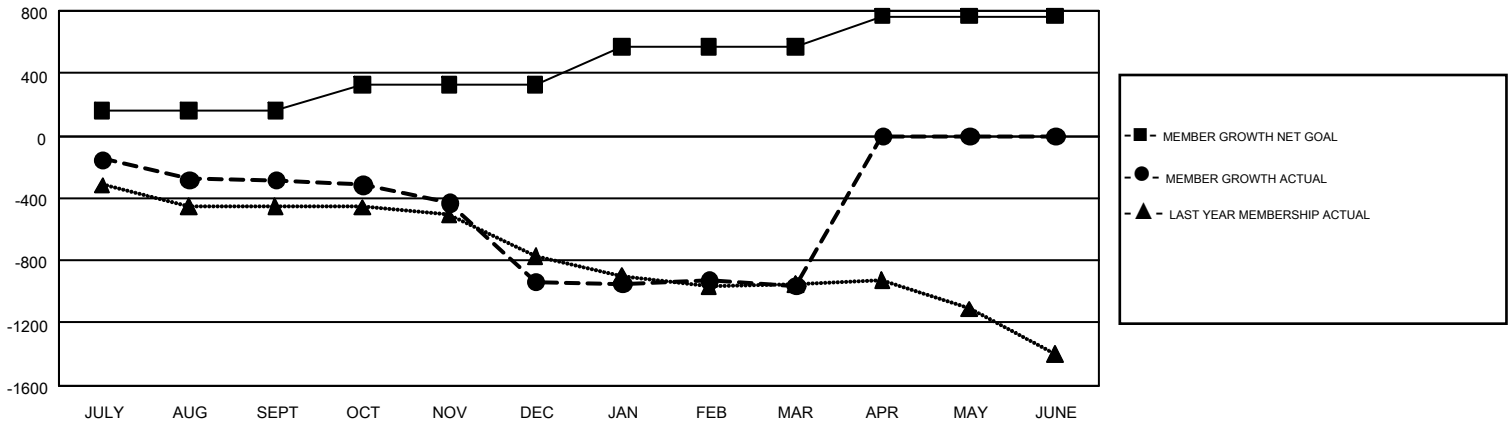
REPORT DOES NOT INCLUDE CLUBS IN UNDISTRICTED AREAS.

Clubs				Members			
RESULTS FOR 2018-2019				RESULTS FOR 2018-2019			
QUARTER	NEW CLUB GOAL	NEW CLUBS	DROPPED CLUBS	QUARTER	MEMBER GROWTH NET GOAL	MEMBER GROWTH ACTUAL	DROPPED MEMBERS ACTUAL (including transfers)
JULY/AUG/SEPT	9	2	13	JULY/AUG/SEPT	163	675	859
OCT/NOV/DEC	6	0	11	OCT/NOV/DEC	167	743	1,327
JAN/FEB/MAR	11	4	9	JAN/FEB/MAR	238	943	873
APR/MAY/JUNE	10	0	0	APR/MAY/JUNE	198	0	0

GOALS AND ACTUAL NEW CLUBS CUMULATIVE



GOALS AND ACTUAL MEMBERS CUMULATIVE



DROPPED CLUBS: 33	754 CLUBS OF 1,536 ADDED 1 OR MORE NEW MEMBERS	<b>GENDER DISTRIBUTION</b>
<b>DROPPED MEMBERS</b>	<a href="#">CLICK HERE FOR CUMULATIVE MEMBERSHIP DATA</a>	MALE            28,628 (71.02%)
DECEASED            553		FEMALE        11,683 (28.98%)
CLUB CANCELLED      162		TOTAL FAMILY UNIT MEMBERS            7,962
OTHER                    2,343		FAMILY MEMBERS PAYING HALF DUES            4,080
<b>TOTAL                    3,058</b>		